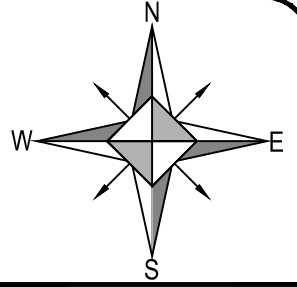
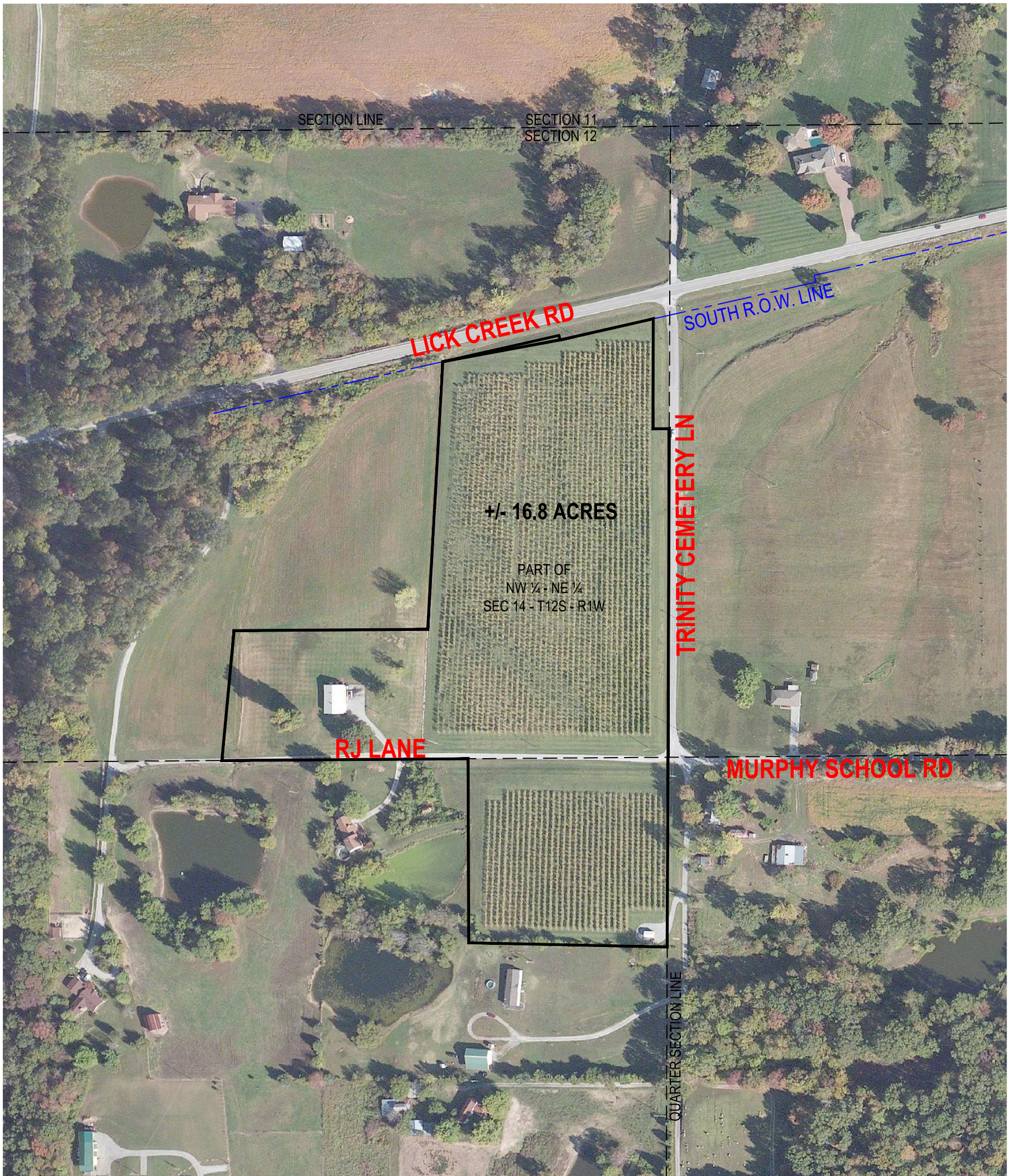


REAL ESTATE AUCTION

**THE CUNNINGHAM VINYARDS
CORPORATION PROPERTY
UNION COUNTY, ILLINOIS**



AERIAL PHOTOGRAPH IS SHOWN, AS A SERVICE TO OUR CLIENT, FOR INFORMATION AND GENERAL IDENTIFICATION PURPOSES, ONLY. IT IS NOT INTENDED TO SHOW EXACT LOCATION OF SURVEYED MONUMENTS AND LINES. DUE TO SLIGHT DISTORTION OF THE PHOTOGRAPH, SURVEYED LINES ON THE PHOTOGRAPH MAY APPEAR DIFFERENT THAN THE SURVEYED LINES AS PHYSICALLY MARKED ON THE GROUND.



Requested By:	Drafted by:	K FIELD	Revisions		
	Project Manager:	K FIELD			
	Date:	09/17/2018	#	Date	Note
	Reviewed by:	MRG			
	Scale:	N/A			
	Job Number:	2018-364			
	Sheet:	1 OF 1			
Drawing Status					
<input type="checkbox"/> Preliminary Drawing <input checked="" type="checkbox"/> Final Drawing					

DIAGRAM

**THE CUNNINGHAM VINYARDS
CORPORATION PROPERTY
UNION COUNTY, ILLINOIS**

Shawnee Professional Services
 Engineers, Surveyors, Acquisition, & Energy
www.ShawneePSI.com

104 SOUTH 4TH STREET P.O. BOX 125 VIENNA, ILLINOIS 62995 (618) 658-6065	901 NORTH DuQUOIN STREET P.O. DRAWER 130 BENTON, ILLINOIS 62812 (618) 439-9447
--	---